

3DS10371AAAA 01

© 2004. All rights reserved.
ALCATEL reserves the right, in customer's interest,
to alter material or technical specification of its products without prior notice.



Contents

| | |
|--------------------------------------|--------------|
| Use and Safety Precautions | p. 3 |
| 1. Your telephone | p. 7 |
| 1.1. Description | p. 7 |
| 1.2. Keys and Indicators | p. 8 |
| 2. Getting started | p. 11 |
| 2.1. Battery and SIM Card | p. 11 |
| 2.2. Charger | p. 13 |
| 2.3. Switching your telephone on | p. 14 |
| 2.4. Switching your telephone off | p. 14 |
| 3. Call | p. 15 |
| 3.1. Making a call | p. 15 |
| 3.2. Answering/Ending a call | p. 15 |
| 3.3. Call your Voice Mail | p. 16 |
| 3.4. Other call options | p. 16 |
| 3.5. Available options during a call | p. 17 |

| | |
|--|--------------|
| 4. The Menu | p. 19 |
| 4.1. Accessing the menu | p. 19 |
| 4.2. Menu structure | p. 20 |
| 4.2.1. Directory | p. 24 |
| 4.2.2. Messages | p. 28 |
| 4.2.3. Audio Profile | p. 32 |
| 4.2.4. Settings | p. 34 |
| 4.2.5. Call information | p. 38 |
| 4.2.6. Call Forwarding | p. 40 |
| 4.2.7. Security | p. 42 |
| 4.2.8. Network | p. 45 |
| 4.2.9. Extra | p. 46 |
| 5. Characters and symbols table | p. 51 |
| 6. Warranty | p. 52 |
| 7. Troubleshooting | p. 56 |
| 8. Information | p. 60 |

Use and Safety Precautions

We recommend that you read this chapter carefully before using your phone. The manufacturer disclaims any liability for damage, which may result as a consequence of improper use or use contrary to the instructions contained in this manual.

• TRAFFIC SAFETY:

Given studies, which show that using a mobile phone while driving a vehicle constitutes a real risk, even when the handsfree kit is used (car kit, headset...), drivers are requested to refrain from using their mobile when the vehicle is not parked.

When switched on, your phone emits electromagnetic waves that can interfere with the vehicle's electronic systems such as ABS anti-lock brakes or airbags. To ensure that there is no problem:

- do not place your phone on top of the dashboard or within an airbag deployment area.
- check with your dealer or car manufacturer to make sure that the car electronics is well insulated.

• CONDITIONS OF USE:

Always treat the phone with care and in a clean and dust-free place.

Switch off the phone before boarding an aircraft to avoid prosecution.

Switch off the phone when you are in health care facilities, except in designated areas. As with other types of equipment now in regular use, mobile phones can interfere with the operation of other electric, electronic or radio frequency devices in their vicinity.

When the telephone is on, it should not come closer than 15cm to any medical device (i.e. cardiac pacemaker, hearing aid, insulin pump, etc.). When making or receiving a call, make sure you place the phone against the ear that is furthest away from the pacemaker or the hearing aid (if there is only one).

Switch the phone off when you are near gas or flammable liquids. Strictly obey the rules relating to the use of mobile phones at fuel depots, petrol stations, chemical plants or in any potentially explosive atmosphere.

Do not allow children to use your mobile phone without supervision.

Do not open or attempt to repair your mobile phone yourself.

Move the handset away from your ear while using the "handsfree" option because the amplified volume might cause hearing damage.

Only use your telephone with Alcatel batteries, chargers and accessories compatible with your model. The manufacturer disclaims any liability for damage caused by the use of other chargers or batteries. Do not allow your phone to be exposed to adverse weather or environmental conditions (dampness, rain, infiltration, dust, sea air, etc.). The minimum and maximum temperatures recommended by the manufacturer are between -10°C and +55°C. Beyond 55°C, the legibility of the display may be impaired, but this is temporary and not serious.

• PRIVACY:

Please note that you must respect the laws and regulations in force in your country regarding taking photographs and recording sounds using your mobile telephone. Pursuant to such laws and regulations, it may be strictly forbidden to take photographs and/or to record the voices of other people or any of their personal attributes, and reproduce or distribute them, as this may be considered to be an invasion of privacy. It is the user's sole responsibility to ensure that prior authorisation be obtained, if necessary, in order to record private or confidential conversations or take a photograph of another person; the manufacturer, the seller or reseller of your mobile phone (including the operator) disclaim any liability which may result from the improper use of the mobile phone.

• BATTERY:

Before removing the battery from your phone, please make sure that the phone is switched off. Observe the following precautions for battery use: do not attempt to open the battery (due to the risk of toxic fumes and burns), do not puncture, disassemble or cause a short-circuit, do not burn batteries or dispose of them in household rubbish, and do not expose to temperatures in excess of 60°C. Batteries must be disposed of in accordance with locally applicable environmental regulations. Only use the battery for the purpose for which it was designed. Never use damaged batteries or not recommended by Alcatel.

• CHARGERS:

Mains powered chargers will operate within the temperature range: 0°C to 40°C. The chargers designed for your mobile phone meet with the standard for safety of information technology equipment and office equipment use. They should be used for this purpose only.

• RADIO WAVES:

Proof of compliance with international standards (ICNIRP) or with European Directive 1999/5/EC (R&TTE) is required of all mobile phone models before they can be put on the market. The protection of the health and safety for the user and any other person is an essential requirement of these standards or this directive.

THIS MOBILE PHONE COMPLIES WITH INTERNATIONAL AND EUROPEAN REQUIREMENTS REGARDING EXPOSURE TO RADIO WAVES.

Your mobile phone is a radio transmitter/receiver. It was designed and manufactured to comply with the radiofrequency (RF) exposure thresholds recommended by international requirements (ICNIRP) (1) and by the Council of the European Union (Recommendation 1999/519/EC) (2). These limits are part of a set of requirements and establish authorised radiofrequency levels for the public. These limits were established by groups of independent experts on the basis of regular and detailed scientific assessments. They include a significant safety margin intended to ensure the safety of all, regardless of age or state of health.

The exposure standard for mobile phones is determined by a measurement unit known as the Specific Absorption Rate or "SAR". The SAR limit is set by international requirements or by the Council of the European Union at 2 watts/kilogram (W/kg) averaged over ten grams of body tissue. The tests used to determine SAR levels were carried out on the basis of standard usage modes with the phones transmitting at their maximum power level over the entire range of frequency bands. Although the SAR was established at the highest certified level, the actual SAR level for the mobile phone during use is generally much lower than the maximum values. In fact, since mobiles phones are designed to operate at many different power levels, they only use the minimum level of power required to provide a connection to the network. In theory, the closer you are to a base station antenna, the lower the power level required by the mobile phone.

The highest tested SAR value for this mobile phone for use at the ear and compliance against the standard is 0.77 W/kg. While there may be differences between the SAR levels on various phones and at various positions, they all meet the relevant International guidelines and EU requirements for RF (radio-waves) exposure.

The World Health Organisation considers that present scientific information does not indicate the need for any special precautions for use of mobile phones. If individuals are concerned, they might choose to limit their own or their children's RF exposure by limiting the length of calls, or using "handsfree" devices to keep mobile phones away from the head and body (fact sheet n° 193). Additional information about electromagnetic fields and public health are available on the following site: <http://www.who.int/peh-emf>.

- (1) The ICNIRP requirements are applicable in the following regions: Central America (except Mexico), South America, North Africa, South Africa, Pacific Asia (except Taiwan and Korea), Australia.
- (2) The European recommendation (1999/519/EC) is applicable in the following regions: Western Europe, Eastern Europe, Israel.

Your telephone









1.1 Description



* Long keypress.

1.2 Keys and Indicators

Function Keys

-  **Answer/make call**
OK to validate an option
 Call Memory (Redial)
-  **Switch ON/OFF** (long keypress)
End call
NO key to refuse an option
 Exit
-  **Delete** characters
 Cancel keypresses
 Exit the Menu to go back to stand by mode
 During a call (long keypress): activate/deactivate the muting.
-  **Direct access to your Directories** (file names classified in alphabetical order)
 During a call, press  to access the call options
-  Access to the Menu
 Scroll the options
 Volume adjustment
-  **Call your voice mail** (long keypress)
 You must first enter the number given by the network operator in "Menu/Messages/Setup"
-  In idle mode, with a long keypress you have direct access to "Send Msg." (Enter text).

 Press and hold the key to obtain “+” for the international prefix

 **Lock/unlock Keypad** (long keypress)

 Activate/Deactivate (long keypress) the vibrator

Icons and indicators (1)

The following icons will be shown on the display as different functions are activated.

 Battery charge level. The bar scrolls up and down while charging.

 The phone is using a roaming network.

 The phone keypad is locked.

 Call forward option is activated.

 A short message is received.

 The message memory is full. To receive new messages, you must delete some old messages.

 Signal strength indicator.

 An alarm has been set.

 Headset (if supplied) has been inserted.

 No ring tone (Silent mode activated).

 The vibrator has been activated.


 A read message.

 An unread message.

 A sent message.

 An unsent message.

 Mute feature is activated.

 [1] The icons and illustrations in this guide are provided for information only.

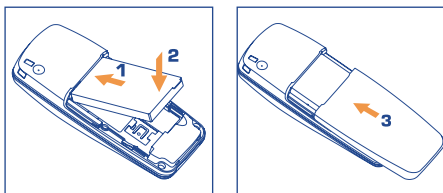
Getting started

2


2.1 Battery and SIM Card

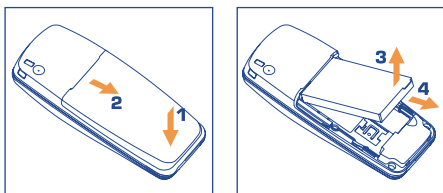
To install the battery

1. Slide the battery into the cradle as shown in the picture and press the battery down flat.
2. Place the back cover as shown in the picture and slide it into place.



To remove the battery

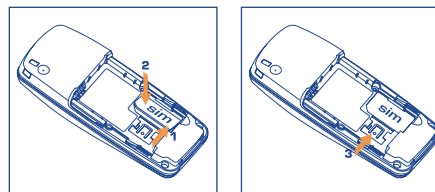
1. Press  to switch off the phone.
2. Slide the battery cover as shown in the picture.
3. Lift up the battery as shown below.



11

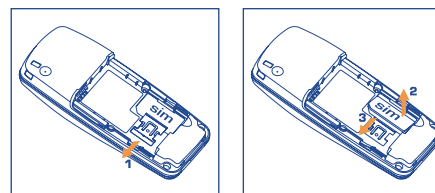
To install the SIM card, make sure that the phone is switched off.

1. Remove the battery (see instructions above).
2. Place the card inside the SIM holder with the golden connectors facing downwards. Push down the latch to hold the SIM card.



To remove the SIM card

1. Remove the battery (see instructions above).
2. Push the latch to remove the SIM card.

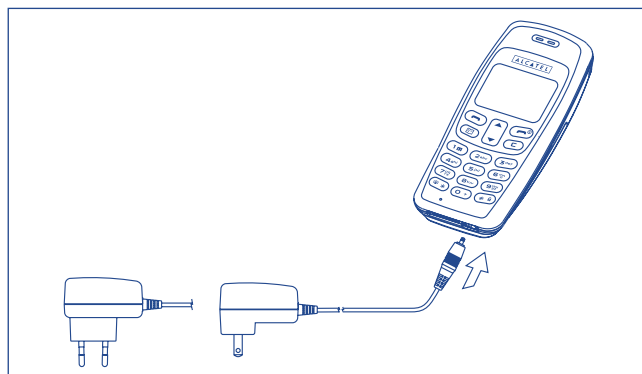


12

2.2 Charger

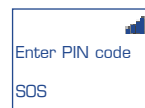
To connect the charger to the phone:

1. Install the battery (see instructions above).
2. Connect the charger to the phone as shown.
3. Be careful not to force the plug into the socket.
4. Use **ONLY** the charger that is supplied with your mobile phone.
5. Do not remove your battery or SIM card while charging.
6. The main socket must be close to the phone and easily accessible.



! If you are charging an empty battery, the screen will take a little while before displaying the charging icon. For optimal functioning of your telephone, we recommend that you charge the battery once a day. The chargers designed for your mobile phone meet with the standard for safety of information technology equipment. They should be used for this purpose only.

2.3 Switching your telephone on



1- Press the  key to switch on the phone.

2- When prompted, "Enter PIN code".

3- Key in the PIN code provided with your SIM card.

4- Press .


PIN and PIN2 (4 to 8 digits)

A PIN (Personal Identification Number) code is supplied to your phone and the SIM card by network providers. With your SIM card inserted, your PIN code will be required every time you switch on your phone. If a wrong PIN code is entered three consecutive times, the phone becomes locked or disabled. You must ask your network operator for the PUK code to unlock or re-enable the code. A PIN2 code is used for other functions, such as Fixed dialing (FDN) and Call barring.

PUK and PUK2 (8 digits)

To enable a locked PIN code, the PUK (Personal Unblocking Key) code is required. Check with your network provider operator for the code.

2.4 Switching your telephone off




Press the  key from the main screen (long keypress) to switch the telephone off.

Call

3

3.1 Making a call

Key in the telephone number and the prefix, and press  (“Call”).


Or, if you have created contacts in the directory (See Directory menu, page 24), access the phone directory by pressing the  key, select the name or number with , then press  (“Call”).

The telephone will vibrate as soon as your correspondent answers your call.

3.2 Answering/Ending a call

A ring tone is heard upon receiving a call, press  (“Accept”) to answer it.

Press  (“End”) to end the call.

If the “Anykey answer” is activated, press any key to answer the call except the  key.

3.3 Call your Voice Mail ()

To access your voice mail to listen to your voice messages.

Press  (long keypress)

You must first input your Voice Mail number from “Menu/Messages/Set up/VoiceMail #”. (See page 29)

3.4 Other call options



Emergency Calls (SOS)

If your phone is covered by the network, dial 112 to make an emergency call or any other number provided by your operator.



Call Memory (Redial)

Press  to access the numbers. Use  to select the number you wish to redial. And press the  (“Send”) key. (See page 39)

Flash Dial






Press keys  to  (long keypress) from an idle screen to call directly the number associated to the key (this is possible if you have programmed the key in the “Menu/Extra/Keypad/Flash Dial”).


Swap between calls

Press the  (“Hold”) key to put a current call on hold while you make another call. When the second call is connected, press the  again (“Swap”) to switch between the two calls.

Conference Call (1)

Several people can be connected together at one time.

1. The first caller makes the call.
2. Press  (“Accept”) to answer the call. A second call arrives, press the  (“Hold”) key to accept the call and put the current call on hold.
3. Press  and press .
4. Repeat Step 2 and 3 to allow other callers to be connected.
5. Press  (“End”) to end the call.

A call can be connected to any single caller by pressing  and  and disconnected by simply pressing  and .

3.5 Available options during a call

To access available options during a call, press .

Volume


Adjust the volume

End active

End a current call

End Hold

End call put on hold

 (1) Check the availability of this service with your operator.

17


End one of Conference (End 1 of Conf)

End one of the conference calls

Handsfree

Activate/deactivate the handsfree mode.

Caution: move the handset away from your ear before activating this mode because the amplified volume could cause hearing damage.

During a call, you can directly activate the handsfree mode by a long press on  key.

Conference

Add one call to the conference

Names

Access your directory list

Call Memory

Access your call memory

Send Msg

Write and send a short message

Services

Access to your operators' services (1)

 (1) Check the availability of this service with your operator.

18

The Menu

4

4.1 Accessing the menu

The menu contains various functions that allow you to do fine-tuning and make adjustments.

To access the Menu, press the up/down key .

Use the up/down  key to scroll through the Menu.

Press the  () key to select an option in the Menu.

Press  () to go back to the previous Menu.

Press  to exit the Menu.

4.2 Menu structure

Directory

- o **VIEW**
 - Options
 - Call
 - Modify
 - Caller group
 - Copy -> SIM
 - Copy -> phone
- o **CREATE**
- o **DELETE**
- o **MEMORY**
- o **COPY ALL**
- o **ERASE ALL**
- o **CAPACITY**
- o **MY NUMBER**
- o **CALLER GROUP**
 - Family
 - Friend
 - Colleague
 - VIP
 - Undesirable

Messages

- o **READ MSG**
 - Inbox
 - Outbox
- o **SEND MSG**
- o **PREDEFINED**
 - Emergency
 - Questions
 - Appointment
 - Greetings
 - Information
- o **DELETE**
 - Inbox
 - Outbox
- o **FREE MEMORY**
- o **SETUP**
 - Voice Mail #
 - Auto scroll
 - Serv. centre
 - Validity
 - Report
- o **CALL V-MAIL**
- o **SMS CB**
 - Read CB
 - Auto display
 - Filter
 - None
 - All
 - List

Audio Profile

- o NORMAL
- o SILENT
- o OUTDOOR
- o CAR
- o MEETING
- o USER DEFINED
 - Activate
 - Modify
 - Key beep
 - Melodies
 - Volume
 - Vibrator
 - Info. beep
 - Msg. beep
 - Service tone

Settings

- o VOLUME
- o CLOCK
 - Set time
 - Set date
 - Set alarm 1
 - Reset alarm 1
 - Set alarm 2
 - Reset alarm 2
 - Time format
 - Date format
- o LANGUAGES
- o CALL WAIT.
- o ANYKEY ANSWER
- o AUTO REDIAL
- o SHOW ID
- o WELCOME MSG.
- o BACKLIGHT
- o CONTRAST
- o INPUT METHOD
- o SCREEN SAVER
- o AUTO ANSWER
- o RESET

Call Info

- o LAST CALL
- o TOTAL CALLS
- o AUTO DISPLAY
- o ANSWER ALERT
- o 1-MINUTE BEEP
- o CHARGE INFO
 - Total charge
 - Max credit
 - Unit price
- o CALL MEMORY

Call Forward

- o FORWARD TO
- o NO COVERAGE
- o IF NO REPLY
- o ALL CALLS
- o IF BUSY
- o STATUS
 - No coverage
 - If no reply
 - All calls
 - If busy
- o CANCEL ALL

Security

- o CALL BARRING
 - Outgoing
 - International (Inter.)
 - Exc -> Home
 - Incoming
 - If Roaming
 - Status
 - Outgoing
 - International (Inter.)
 - Exc -> Home
 - Incoming
 - If Roaming
 - Cancel all
 - Change PWD
- o FDN DIR
- o CHANGE PIN
- o ACTIV. PIN
- o DEACT. PIN
- o CHANGE PIN 2
- o KEYPAD LOCK




Network

- o SEARCH MODE
- o NEW SEARCH
- o PREFERRED


Extra

- o CALCULATOR
- o DIARY
- o W.W. CLOCK
- o GAMES
- o IDLE ICON
- o KEYPAD
 - Undefined
 - Audio Profiles
 - Read Msg
 - Send Msg
 - Flash dial
 - Diary
 - Keypad lock

4.2.1 Directory

You can save names and numbers in your SIM or phone directory. Press  to access the Directory. Press  () to access the options in the Directory.



Example:

You can save and modify all the names and telephone numbers in your SIM(I) card and up to 100 files in your phone. Once your contact names and telephone numbers are saved in the Directory, from the main screen, access the list of names directly by pressing .


Directory

- o VIEW
 - Options
 - Call
 - Modify
 - Caller group
 - Copy -> SIM
 - Copy -> Phone
- o CREATE
- o DELETE
- o MEMORY
- o COPY ALL
- o ERASE ALL
- o CAPACITY
- o MY NUMBER
- o CALLER GROUP
 - Family
 - Friend
 - Colleague
 - VIP
 - Undesirable

VIEW


You can search a name either by scrolling with the  key or by keying in the first letter of a name. To modify or edit an item, simply press  (Option) to access the item.

- Options

- Call: To call the selected number.
- Modify: To modify, use the  key to delete characters.

(1) The SIM directory's capacity depends on the operator.

- **Caller group:** This menu allows you to classify your contact names into different categories (Family, Friend, ...) and assign dedicated ring tones.

Use the  key to scroll through the groups, press  (✓) to select the group then press  to select a melody or a picture.

- **Copy to SIM:** Copy the selected file from the phone directory to SIM
- **Copy to Phone:** Copy the selected file from the SIM directory to phone

CREATE

You can create and store names and telephone numbers in the SIM or phone directory. To modify an existing number in the directory, simply key in the new number and it will automatically overwrite the previous number.

DELETE

Press  to delete any item in the directory list.

Press  to Exit.

MEMORY (In SIM / In phone)

When "In SIM" is selected, any new directory file created will use SIM card memory. The files created are saved in the SIM memory. Otherwise they are saved in the product (phone) memory.

COPY ALL

- Phone to SIM:

Copy all directory contents from the phone memory to SIM card memory. All SIM files will be replaced by Phone files and you can choose to keep the original files or not.

- SIM to phone:

Copy all directory files from SIM card memory to the phone memory. All phone files will be replaced by SIM files and you can choose to keep the original files or not.

ERASE ALL

- In SIM:

Delete all files in SIM memory.

- In phone:

Delete all files in the product memory.

CAPACITY

This menu allows you to check the capacity of your SIM or phone directory.

MY NUMBER

You can view and modify your personal phone number.

CALLER GROUP (See page 25)

This menu allows you to classify your contact names into different categories. Caller groups are: Family - Friend - Colleague - VIP - Undesirable. You will be able to assign them with dedicated ring tones and icons.

4.2.2 Messages

You can send and receive written messages to/from other mobile phone users. Press  to access the Menu options and  to access the messages.

Messages

- o **READ MSG**
 - [Inbox
 - [Outbox
- o **SEND MSG**
- o **PREDEFINED**
 - [Emergency
 - [Question
 - [Appointment
 - [Greetings
 - [Information
- o **DELETE**
 - [Inbox
 - [Outbox
- o **FREE MEMORY**
- o **SETUP**
 - [Voice Mail #
 - [Auto scroll
 - [Serv. Centre
 - [Validity
 - [Report
- o **CALL V-MAIL**
- o **BROADCAST**
 - [Read CB
 - [Auto display
 - [Filter
 - [None
 - [All
 - [List

READ MSG

- **Inbox:** Messages received.
- **Outbox:** Messages sent.



Each message is identified by one of the following symbols:



- (1) Read message
- (2) Unread message
- (3) Sent message
- (4) Unsent message.


Press  to display the previous screen

Press  to view the complete text of the selected message.

Press  to scroll through the text. Press  ("Options") to access the submenu:

- Inbox:**
 - Delete
 - Forward
 - Reply
 - Call
- Outbox:**
 - Delete
 - Send

SEND MSG

To create a new message, enter the recipient's number, then press  to select "Send, Send & Save, Save".

Press  to validate the option.

PREDEFINED

Instead of creating a new message, select a predefined message from a list. Any predefined message can be modified before sending.

DELETE

Delete messages in Inbox/Outbox to free up memory.

FREE MEMORY

Select the option to check the SIM card memory available for new messages (up to 10).

SETUP

The following items can be set:

- **Voice Mail #**
Enter the number for your voice mailbox. The number will be saved in the SIM card. You may set a new or change an existing voice mail number in this menu.

- **Auto scroll**

This menu controls actions when reading a message. If it is activated, the message text will automatically scroll.

- **Serv. centre (I)**

Your operator service centre call number. It may be automatically provided.

- **Validity**

Time during which attempts will be made to deliver the message to your correspondent in case of unsuccessful delivery. You can select a time period from a choice of predefined periods.

- **Report**

Request for acknowledgement of receipt for each message sent.

CALL V-MAIL

You may access your voice mailbox and listen to calls recorded in your voice mail.

SMS CB


Messages broadcast over the network are automatically displayed on the main screen.



- **Read CB**

This allows you to read the last broadcast message received. The phone stores this last message only when the option is activated.

 (1) Check the availability of this service with your operator.

- Auto display

When the function is activated, broadcast messages will automatically be displayed. Use the  key to scroll through the message.

Press  or  to exit. Broadcast messages automatically disappear after a short period of time.

- Filter

This allows you to select the type of cell broadcast message you want to receive. The Reception menu contains a list of codes for types of CB messages, which are defined by the network service.

- None: You can receive no message.
- All: You can receive all broadcast messages.
- List: List of all the channels where you want the messages to be received.

4.2.3 Audio Profile

Audio settings are preset in your mobile phone.


There are six environments: Normal, Silent, Outdoor, Car, Meeting, and My setup. You can choose the most suitable setting according to your environment.

To activate one, just select the environment you want and then select "Activate". To modify the settings, just select the environment and then select "Adapt".

Audio Profile

- o **NORMAL**
- o **SILENT**
- o **OUTDOOR**
- o **CAR**
- o **MEETING**
- o **USER DEFINED**
 - Activate
 - Modify
 - Key beep
 - Melodies
 - Volume
 - Vibrator
 - Info. beep
 - Msg. beep
 - Service tone

- Modify

- Key beep
You can choose the sound of the key beeps by selecting: "Click" tone, "DTMF" tone, or "Silent".
- Melodies
Select the melody from a choice of 15 different melodies available.
- Volume
Adjust the volume of the ring tone using the  key.

- **Vibrator**
Activate/deactivate the vibrator.
- **Info. beep**
Activate/deactivate this option for information such as low battery beep.
- **Msg. beep**
Activate/deactivate the message alert at the reception of an SMS (short text message).
- **Service tone**
If this option is activated, the phone will generate a beep as soon as a network is available.


4.2.4 Settings

This menu allows you to set up the functions of your mobile phone.

Settings

- o **VOLUME**
- o **CLOCK**
 - Set time
 - Set date
 - Set alarm 1
 - Reset alarm 1
 - Set alarm 2
 - Reset alarm 2
 - Time format
 - Date format
- o **LANGUAGES**
- o **CALL WAIT**
- o **ANYKEY ANSWER**
- o **AUTO REDIAL**
- o **SHOW ID**
- o **WELCOME MSG.**
- o **BACKLIGHT**
- o **CONTRAST**
- o **INPUT METHOD**
- o **SCREEN SAVER**
- o **AUTO ANSWER**
- o **RESET**

VOLUME

To increase/decrease the earpiece volume, press the  key.

CLOCK

The clock contains the date and alarm functions. You set time, date, activate/deactivate alarms:

- **Set time**
Set the time.
- **Set date**
Set the date.
- **Set alarm 1**
Set the alarm 1.
- **Reset alarm 1**
Reset the alarm 1.

- Set alarm 2

Set the alarm 2.

- Reset alarm 2

Reset the alarm 2.

- Time format

Change the format of the time display (24 hours mode, 12 hours mode).


- Date format

Change the format of the date display.



LANGUAGES

You can switch between different languages and select a language in which texts will be displayed, if the language is available in your phone.

CALL WAIT

Activate/deactivate the signalling of a second incoming call. Press  to answer the incoming call if you are already on line.

ANYKEY ANSWER

When this feature is not active or is deactivated, you can answer an incoming call only by pressing . But if this feature is active or activated, you can answer an incoming call by pressing any key of the phone, except the  key.

AUTO REDIAL

Activate/deactivate the automatic callback of the last busy number. The auto-redial request can be cancelled at any time.

SHOW ID

Activate/cancel the option which makes your calls anonymous (your number is not transmitted by the network to the parties you call).

WELCOME MSG

This function allows you to create a welcome message at switch on.

BACKLIGHT

Activate/deactivate the backlight at any keypress or incoming call.

CONTRAST

Adjust the screen contrast.

INPUT METHOD (1)

The menu allows you to choose the smart input method that you wish to use.

SCREEN SAVER

Activate/deactivate the animation on the main screen.

AUTO ANSWER (2)

When this function is activated, any incoming call will be accepted automatically IF the headset is connected.

RESET

All settings can be reset to the factory standards.

4.2.5 Call information

Management of call time and charges.

Call Info

- o LAST CALL
- o TOTAL CALLS
- o AUTO DISPLAY
- o ANSWER ALERT
- o I-MINUTE BEEP
- o CHARGE INFO
 - └ Total charge
 - └ Max credit
 - └ Unit price
- o CALL MEMORY

LAST CALL

Displays the duration of the last call.

TOTAL CALLS

Displays the total duration of all incoming and outgoing calls.

AUTO DISPLAY

Activate/deactivate the automatic display of the call duration after ending the call.

ANSWER ALERT

This option activates or deactivates the vibrating alert when your correspondent answers your call.

I-MINUTE BEEP

Activate/deactivate the beep to sound every minute during a call.


[1] Depends on the language.
[2] Depending on your phone model and availability.

Check the availability of this service with your operator.

CHARGE INFO (1)

Charges will be displayed after ending a call if your network service provides information on the AoC (Advice-of-Charge).

- Total charge

You can display the total cost of all the calls. To reset the value, press  ("Reset").

- Max credit


You can set a maximum credit allocated to your calls. Beyond this credit limit, you will not be able to make any chargeable calls.

- Unit price

You can enter the value for one telecom unit. Press  to select different entry fields.

CALL MEMORY

You can save information of the last 20 calls in your phone. Scroll through these calls using the  key.

For each number found, you can access the options by pressing  ("Options") for "Call" or "Save" (the number in the Directory).



(1) Check the availability of this service with your operator.

4.2.6 Call Forwarding

This function allows you to direct incoming calls from your phone number to another (the phone number is assigned to the network but not to the phone).



Call Forward

- o FORWARD TO
- o NO COVERAGE
- o IF NO REPLY
- o ALL CALLS
- o IF BUSY
- o STATUS
 - o No coverage
 - o If no reply
 - o All calls
 - o If busy
- o CANCEL ALL

FORWARD TO

Prior to forwarding any call, you must first enter the phone number to which you wish the calls to be forwarded.

NO COVERAGE



Your incoming calls are forwarded when your phone is beyond the network service area range or when it is switched off. You can activate or deactivate this function simply by pressing  (ON) or  (OFF).

To exit the function, press .

IF NO REPLY

Incoming calls are forwarded if you don't answer them.

ALL CALLS

All incoming calls are forwarded. You can activate or deactivate this function by simply pressing  or .

To exit the function, press .

IF BUSY

Incoming calls are forwarded if your phone is busy.

STATUS

Displays the list of different types of call forwarding and their status.

CANCEL ALL

This option cancels all call forwarding modes that are activated.

4.2.7 Security

This menu allows you to set up security features.

Security

- o **CALL BARRING**

- o Outgoing
- o International
- o Exc -> Home
- o Incoming
- o If Roaming
- o Status
 - o Outgoing
 - o International
 - o Exc -> Home
 - o Incoming
 - o If Roaming
- o Cancel all
- o Change PWD

- o **FDN DIR**
- o **CHANGE PIN**
- o **ACTIV. PIN**
- o **DEACT. PIN**
- o **CHANGE PIN 2**
- o **KEYPAD LOCK**

CALL BARRING (1)

This option restricts incoming and outgoing calls.

- **Outgoing**
No outgoing calls are enabled.
- **International (Inter.)**
No outgoing international calls are enabled.
- **Exc. -> Home**
No (outgoing) international calls are enabled. Only local and to home country calls are permitted.
- **Incoming**
No incoming calls are enabled.
- **If Roaming**
No incoming calls are enabled when you are abroad (roaming).

(1) Check the availability of this service with your operator.

- Status

Displays the list of different types of call barring modes and their status.

- Cancel all

This option cancels all call barring modes that are activated.



This service may not be available on your network. To access this service, a network code is required.

FDN DIR.

This function allows to restrict outgoing calls to numbers saved in the fixed dialling directory (FDN) only (1).

CHANGE PIN

You may change the PIN code.

ACTIV. PIN

To activate the PIN code. When you switch on the phone, you will be prompted to enter the PIN code.



(1) A PIN2 code is required.

DEACT. PIN

To cancel the PIN activation.

CHANGE PIN2

To change the PIN2 code.

KEYPAD LOCK

To activate/deactivate the keypad lock. When activated, all the keys are automatically locked one minute after the last keypress. They can be unlocked again either by an incoming call, or by simply pressing ***#0#**.

4.2.8 Network

This menu allows you to select and register with the network your phone will use.

Network

- o SEARCH MODE
- o NEW SEARCH
- o PREFERRED

SEARCH MODE

Depending on the option selected, the network search mode is:




- **Automatic:**
The phone looks for available networks and selects one
- **Manual:**
The choice of connection is left up to the user.

NEW SEARCH

You can search available networks and manually select one of them.

PREFERRED

List of networks to which you wish to be connected in priority. To update the list:

- Press  to access the list
- Choose the network using the  key
- Press  to add, delete, or modify the network in the list

4.2.9 Extra


This menu allows you to personalise your telephone.

Extra



- o CALCULATOR
- o DIARY
- o W.W. CLOCK
- o GAMES
- o IDLE ICON
- o KEYPAD

- Undefined
- Audio Profile
- Read Msg
- Send Msg
- Flash dial
- Diary
- Keypad lock


CALCULATOR


For basic operations, you can directly access the respective symbols by pressing the  key.

- 1 keypress for +
- 2 keypresses for -
- 3 keypresses for x
- 4 keypresses for /

Add number and press  for the result. Use  key for decimals.

For further operations, press .

Your calculator has a built-in currency converter. For initial settings,  and select "Exchange rate", enter rate between local and foreign currencies.

From calculator screen, enter the amount you wish to convert and press  to convert either in local or foreign.

DIARY

This function allows you to check daily and monthly diary information. Press  to access the following options:

- **View day:** View notes of the day.
- **Make notes:** reminder, birthday, call, meeting.
- **Erase note:** on a chosen day, one by one, all at once.
- **View all:** See the list of all programmed notes.

You can also set an alarm or an SMS to a written day note as a reminder.

W.W. CLOCK (WORLD WIDE CLOCK)

This function allows you to browse the clock when you are travelling around the world.

1. Select the town where you are
2. Check if the time and date are correct, if they aren't
3. Access "Menu/Settings/Clock" and set the clock for the right time and date.

GAMES

Three games are available to the players.

- Punch


Punch the mouse of each hole with the following keys:

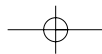
-  top left
-  top right
-  intermediate
-  bottom left
-  bottom right

Press  to end the game.


- Tetris

Place the block so it fills the gap:

-  (left)
-  (right)
-  (down)
-  (rotation)
-  (end game)



- Mine

Select a square and open it using the  key. The number shows the number of mines surrounding that square. Through deduction, you will be able to select a maximum number of squares in the least time while avoiding the mines.

-  (up)
-  (down)
-  (left)
-  (right)
-  (open)
-  (mark)

IDLE ICON


This function allows to choose an idle icon from a list.

KEYPAD

You can assign keys 2-9 with a specific function or phone number. Once a key has been programmed, you will be able to access the assigned phone number or function directly by making a long keypress on the programmed key when in idle mode.

To program the key:

Press  and select "Keypad"  (✓).

Press  (for Options), you will be able to assign a different function to the key. The available functions are:

- Undefined

You do not wish to program or assign a specific function to the key.

- Audio Profiles

You can select a specified audio profile. For example, the silent mode.

- Read Msg

Direct access to the inbox/outbox lists to read the messages.

- Send Msg

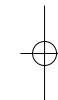
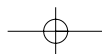
Direct access to the inbox/outbox lists to write the messages.

- Flash dial

Program a telephone number.

- Diary

Direct access to your diary details.



Characters and symbols **5** table

| Length Digit | Upper case | Lower case |
|-------------------|---|---------------------|
| 1 | space, (,), | space, (,), |
| 2 ^{abc} | A, B, C, 2, Ä, Å, Æ, Ç | a, b, c, 2, ä, å, æ |
| 3 ^{def} | D, E, F, 3, É | d, e, f, 3, é, è |
| 4 ^{gh} | G, H, , 4 | g, h, i, 4, i |
| 5 ^{ijkl} | J, K, L, 5 | j, k, l, 5 |
| 6 ^{mno} | M, N, O, 6, Ñ, Ö | m, n, o, 6, ñ, ö, ò |
| 7 ^{pqr} | P, Q, R, S, 7, ß | p, q, r, s, 7, ß |
| 8 ^{tuvw} | T, U, V, 8, Ü | t, u, v, 8, ü, ù |
| 9 ^{xyz} | W, X, Y, Z, 9 | w, x, y, z, 9 |
| 0 + | +, -, 0 | +, -, 0 |
| 10 * * | *, ,, ,, ,, ,, ,, ' , " , @ , < , > , ! | |
| # 0 | #, =, ?, \$, &, %, /, \$, ¥, £ | |

1. To enter a word, press the key corresponding to the desired letter.
2. To switch between upper and lower case letters, simply press the key with the desired character and hold it down until the letter appears in lower case.
3. All further keys will remain in lower case until you press and hold a letter key again, which will take you back to the upper case mode.

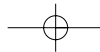
Warranty **6**

Congratulations on choosing this mobile phone - we hope that you will be totally satisfied with it.

Notwithstanding any other applicable statutory warranties, this mobile phone and the battery are guaranteed against any manufacturing defect for a period of ONE (1) year from the date of purchase shown on your invoice. Nevertheless if the statutory warranty in force in your country exceeds one (1) year, the statutory warranty is not affected by the manufacturer's warranty. The present warranty terms also apply to the accessories but for a period of SIX (6) months from the date of purchase shown on your invoice.

Under the terms of this warranty, you must inform your dealer or any maintenance centre (see list of maintenance centres at our website - www.alcatel.com) without delay, of any defect and present the invoice given to you at the time of purchase.

The dealer will decide whether to replace or repair, as appropriate, all or any part of the equipment (telephone or accessory) found to be defective. This warranty covers the cost of parts and labour but excludes any other costs. Repair or replacement may be carried out using reconditioned components offering equivalent functionality.



Servicing under the terms of this warranty, especially repair, modification or replacement of parts shall entitle to a three month warranty unless there are statutory provisions to the contrary.

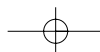
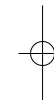
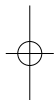
This warranty shall not apply to damage or defects (to your telephone and/or accessory) caused by:

- use not conforming with the instructions for use or installation,
- non observation of the technical and safety standards applicable in the country where the equipment is used,
- improper maintenance of batteries and other sources of energy, and of the overall electric installation,
- accidents or the consequences of theft, (of the vehicle), acts of vandalism, lightning, fire, humidity, infiltration of liquids, atmospheric influences,
- combination or integration of the equipment in hardware not supplied or not recommended by Alcatel, without express written consent for such,
- modifications, alterations, or repairs carried out by parties not authorised by Alcatel, the dealer or the approved maintenance centre,
- use of the equipment for a purpose other than that for which it was designed,

- normal wear,
- deterioration caused by external causes (RF interference produced by other equipment, fluctuations in mains voltage and/or voltages on telephone lines, etc),
- modifications made to the equipment even if they are unavoidable due to changes in regulations and/or modification of network parameters,
- connection faults resulting from unsatisfactory radio transmission or caused by the absence of radio relay coverage.

Equipment on which markings or serial numbers have been removed or altered, and handsets on which labels have been removed or deteriorated shall be excluded from the warranty.

Apart from the statutory warranty, the above provisions constitute the only claims which can be made against the manufacturer and dealer on the grounds of equipment defects, this warranty excludes any other explicit or implied warranty associated with the sale of the equipment.




Troubleshooting

7

Before contacting the after-sales service, we advise you to perform the following checks for solutions to equipment problems:

My mobile phone does not switch on

- Press the  key for at least 3 seconds
- Check the battery charge level
- Check the battery contacts, remove and then reinstall your battery, then turn your telephone back on

My screen is difficult to read

- Clean your screen
- Check the contrast
- Activate the backlighting
- Use your mobile phone in accordance with the recommended conditions of use

My mobile phone turns off by itself

- Check that your keypad is locked when you are not using your mobile phone
- Check the battery charge level

My mobile phone does not charge properly

- Make sure that your battery is not completely discharged; the battery charge indicator can take several minutes to start flashing
- Make sure charging is performed under normal conditions (-10°C +55°C)
- Make sure the battery is correctly inserted
- Make sure you are using an ALCATEL battery and charger
- When abroad, check that the electrical current compatibility


My mobile phone is not connected to a network

- Try connecting in another location
- Verify the network coverage with your operator
- Check with your operator that your SIM card is valid
- Try selecting the available network(s) manually (see page 45)
- Try connecting at a later time if the network is overloaded

SIM card error

- Make sure the SIM card was correctly inserted (see page 12)
- Make sure the chip on your SIM card is not damaged or scratched

Unable to make calls

- Make sure you have dialled a valid number and press the  key
- For international calls, check the country and area codes
- Make sure your mobile phone is connected to a network, and that the network is not overloaded or unavailable
- Check your subscription with your operator (credit, SIM card valid, etc.)
- Make sure you have not barred outgoing calls (see page 42)

Unable to receive calls

- Make sure your mobile phone is switched on and connected to a network (check for overloaded or unavailable network)
- Check your subscription with your operator (SIM card validity)
- Make sure you have not forwarded incoming calls (see page 40)
- Make sure that you have not barred certain calls

Your caller's name does not appear when a call is received

- Verify that you have subscribed to this service with your operator
- Check that the correspondent's number and name have been stored in your directory
- Your correspondent has concealed his/her number

The sound quality of calls is poor

- You can adjust the volume during a call by means of the  key
- Check the radio reception icon 

When I select a number from my directory the number is not dialled

- Make sure that you have correctly recorded the number in your file
- Make sure that you have selected the country prefix when calling a foreign country

I am unable to create a file in my directory

- Make sure that your SIM card directory is not full; delete some files or save the files in the product directory

My correspondents are unable to leave messages on my voice mail

- Contact your network operator to check service availability

I can't access my voice mail

- Make sure your operator's voice mail number is correctly entered in "Messages/ Set up Menu"
- Try later if the network is busy

I am unable to send short messages

- Contact your network operator to check service availability
- Verify the service centre number with your operator
- The service centre may be saturated; try again later

The icon is displayed on my main screen

- You have saved too many short messages on your SIM card; delete some of them to free memory

The "searching" icon is displayed on my main screen

- You are not under coverage

I have already entered 3 incorrect PIN codes


- Contact your network operator to obtain the PUK code (Personal Unblocking Key)






Information

8

- **Web site:** www.alcatel.com
- **WAP address:** wap.alcatel.com
- **Alcatel hotline No.:** see "Alcatel Services" leaflet (calls charged at applicable local rate in your country).

Your telephone is designed to make and receive calls. It operates on GSM networks with 900 MHz and 1800 MHz bands.

The  marking indicates that your telephone complies with EC directive 1999/5/EC (R&TTE) and the accessories with applicable EC directives. The entire copy of the Declaration of Conformity for your telephone can be obtained through Alcatel website: www.alcatel.com.

Your telephone is identified by an IMEI number shown on the packaging label and in the product's memory. We recommend that you note the number the first time you use your telephone by entering      and keep it safely. It may be requested if your telephone is stolen. This number allows your mobile telephone to be blocked preventing a third person from using it, even with a different SIM card.

June 2004